

# Powering the Future of AI in Trucking

Sponsored By:

---

Lenovo  
**OEM Solutions**

---

Wednesday, August 16, 2023  
2:00 PM Eastern

# Housekeeping



- Audience will be muted
- A question & answer session will follow the presentation
- Submit questions by clicking the Q&A icon at the bottom of your screen

# Today's Presenters



Andrea Thomas  
Intel Nex Cities and Critical Infrastructure  
Business Development/ Product Lead  
Intel Corporation



Trent Richardson  
Global ThinkEdge Solutions  
Leader  
Lenovo





Lenovo  
OEM Solutions

# Powering the Future of AI in Trucking

**Andrea Thomas** - Intel NEX Cities and Critical Infrastructure Bus  
Dev/Product Lead

**Trent Richardson** — Global ThinkEdge Solutions Leader, Lenovo

**Lenovo**





# Agenda

- Current State of Fleet Industry
- Future Opportunities
  - Business Trends
  - Demand Trends
  - Technology Adoption Trends
  - Advanced Telematics Solutions
- Fleet Market Segments and Use Cases
- Ecosystem
- Trends in North America
- Define Edge Computing
- Portfolio : Edge to Core
- Lenovo OEM & ISV Partner Program



# Current State of Fleet Industry

## Industry Segments of Intermodal Supply Chain

- Cargo Container
- Cold Chain & Reefer (Temperature controlled transport units)
- Bulk and Liquid Carrier
- Last Mile Delivery

## Current Application of Telematics

- Increased penetration of IOT Devices (decentralized, point solutions, no orchestration or analytics)
- Driver Management
  - Driver scorecards
  - Driver safety
- Fleet or Asset Management
  - Monitoring equipment usage and behavior
- Tracking and Wayfinding
  - Geolocation tracking and mapping
  - Navigation
- Safety and Compliance
  - Usage or emissions monitoring
  - Emergency shut down



# Future Opportunities

Increased demand for prescriptive automation and analytics (12% for Vehicle Telematics from 2022-2023)

- Fleet Industry is being transformed by electrification and interest in autonomy
- Worldwide population growth and rising e-commerce demands
- Global Transportation Management System market size expected to reach 6.6B by 2026
- Commercial Vehicle Market in North America expected to grow from \$13.8B in 2023 to \$36.2B in 2032



Source: Harbor Research

# Future Opportunities

## Technology Trends Driving Adoption

- Increased investment in AI drives use of applications that use machine learning, computer vision, etc.
- Vehicle Electrification/ Fleet Sustainability Monitoring require more intelligence at the edge
  - Vehicle sensing platforms
  - Enterprise management systems
  - Cybersecurity infrastructure
- Digital Twins to model supply chains
  - Need for real time data and connectivity
  - Improves operational efficiency
- Fleet Data Exchange
  - Explosive demand in workforce needs (430k alone in 2021)
- Edge AI and Machine Vision





# Future Opportunities

## Business Trends Driving Adoption

- Cost
  - Higher costs of labor, fuel, goods
- Visibility
  - Need for better demand signaling
  - Desired integration into customer and supplier systems
- Competition
  - Increased competition in last mile delivery space
  - Fulfillment off fast delivery commitments
- Efficiency
  - Lack of end-to-end supply chain visibility
  - Limited view of bottlenecks, such as goods stuck at ports of entry
  - Insufficient route planning
  - Lack of visibility into inventory availability



# Future Opportunities

## Advanced Telematics Solutions

- Use cases can be customized and managed from single platform/edge device
- Aggregate and inference complex AI, ML workloads and data types
- Advanced, after market solutions can be applied to fleets with diverse vehicles
- Powerful, ruggedized onboard computers (edge devices) can handle multiple, complex workloads and capture data for near real-time or future decision making
  - Multimodal data types including video, temperature, vibration, vehicle analytics, telematics, etc.)





# Future Opportunities

## How does the ecosystem work?

- AI and ML driven solutions need various players to enable deployment of end to end solutions
  - Network and specialized component providers
  - ODMs and OEMs
  - ISVs and SIs
  - Fleet owners, Freight carriers, 3PLs
- Must provide connectivity, cloud, and software even in remote or rugged environments
  - Compute at the edge
  - Alerts for drivers, operators, and data can be sent back to command centers, warehouses, etc.
- Collaboration between industry players allows for more rapid deployment





# North American Intermodal Shipping Opportunities

## Overall Trends/Growth Areas

- Recent supply chain challenges exposes vulnerabilities
- Strategic fleet management to improve visibility and deployment
- Real-time situational awareness and predictive decision making
- Optimized supply chain orchestration to avoid backlogs
- Integrated AI transportation systems
- Real-time cooperation and planning



## North American Trends

- Increased regulations motivate investment in new technologies
- Push towards autonomous operations
- Environmental Impact Goals
- Canadian Fleet Transformation
- 12% Increase in demand for Telematics Applications
- 19 Jurisdictions in the US and Canada have signed pledges to expand electrification of medium/heavy-duty trucks by 2030 (30% of sales)
- Number of vehicles shipped in NA expected to grow from 5.3M in 2023 to 13M in 2032

# What Intel® Offers

Increased intelligence at the edge can be added to new and existing vehicles

- Intel® powered solutions at edge roadmap covers major fleet use cases and sub-segments, optimized for Intel® CPUs, iGPUs, and XPU's
  - Workload consolidation can combine sensor capture for AI, ML, and data analytics
  - Enables development of solutions to address top customer concerns
- Scalable solutions that help accelerate deployment of intelligent devices
- Better security because multiple devices replaced by single, Intel powered edge device
- Unites disparate solutions, processes, and functions on single, ruggedized in-vehicle computer
- Allows simplification via a containerized, analytics platform
- Modular approach supports multiple systems and vehicle types
- Accommodates range of use cases that can be customized or expanded in the future to meet new requirements
- Reduced labor and maintenance because of single platform access

# Fleet Market Segments and Use Cases

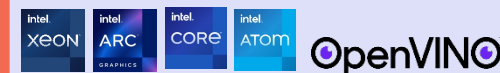
Segment	Commercial (Cargo, Freight)	Public	Industrial
Segment Specific Use Cases	<ul style="list-style-type: none"><li>Cargo Monitoring</li><li>Cold Chain Management</li><li>Cargo Optimization</li></ul>	<ul style="list-style-type: none"><li>Collision Reconstruction and Asset Management</li><li>Data</li><li>Efficient Equipment Allocation</li><li>Field Service Management</li></ul>	<ul style="list-style-type: none"><li>Yield and Harvest Monitoring</li><li>Adjacent Operations Management</li><li>Autonomous Equipment Operation</li></ul>
Horizontal Use Cases	<ul style="list-style-type: none"><li>Fleet Location Tracking</li><li>Route Planning</li><li>Data Collection and Analytics</li></ul>	<ul style="list-style-type: none"><li>Predictive Maintenance</li><li>Fuel Management</li><li>Worker Safety Monitoring</li><li>Theft Prevention</li></ul>	<ul style="list-style-type: none"><li>Near Real-Time Alerts</li><li>Integrated in-cab Communications</li><li>Asset Tracking</li></ul>



# Intel-powered solutions address key Fleet customer concerns

Concern	Benefits	Capabilities
Safety	Drive monitoring & coaching	Camera & Sensor capture, AI/ML, Sensor fusion
Efficiency	Reduced waste & increased operational efficiency	Leverage edge compute to aggregate sensory data & perform analytics
Fuel Costs	Route optimization & enhanced fuel efficiency	Combine sensor capture with ML, AI, & data analytics
Predictive Maintenance	Reduced downtime, increased uptime	Combine sensor capture with ML, AI, & data analytics and capture malfunction patterns before failure
Availability	24/7 availability through ruggedized design	Hardened design capable of withstanding vibration, extra temps, harsh conditions, water ingress, dust
Reliability	Enhanced availability through improve serviceability	Redundant storage provides enhanced reliability
Security	Security enhanced technologies to maintain integrity	Secure solution that operates with authorized software and devices
Flexibility	Increased through optimized labor, automation, 24/7 availability	Flexible design reusable across segments, with reduced TTM and ROI

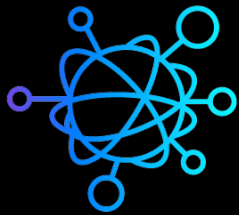
## Intel Ingredients



Extended product lifecycle



# Trends in AI: The future of AI will be hybrid



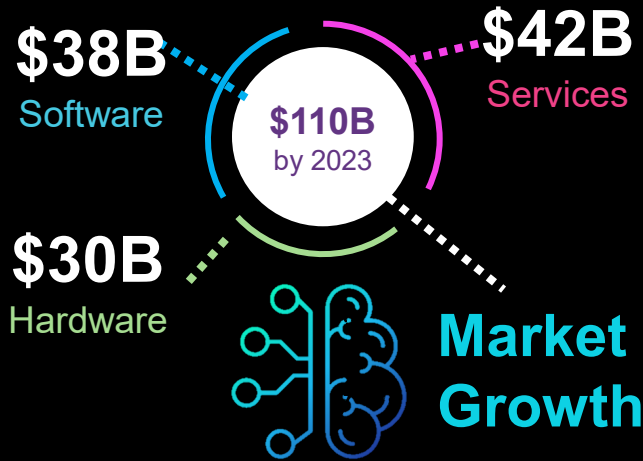
## Explosion of Data

By 2025 the global datasphere will exceed

**175ZB**

33ZB  
2019

175ZB  
2025

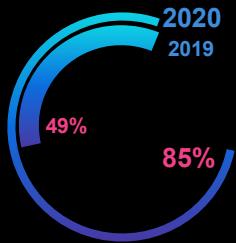


## Surging AI Investment



**75B**

VC investment in AI – **20%** of total WW



## Enterprise AI Adoption

Enterprises stage of adoption

Significant growth in enterprise AI adoption

## Edge AI



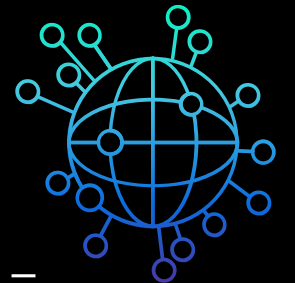
**28%**

of AI hardware will be at the edge.\*

## Fragmented Ecosystem

**22K**

AI ISVs Worldwide – **250** raised more than **100M** USDs

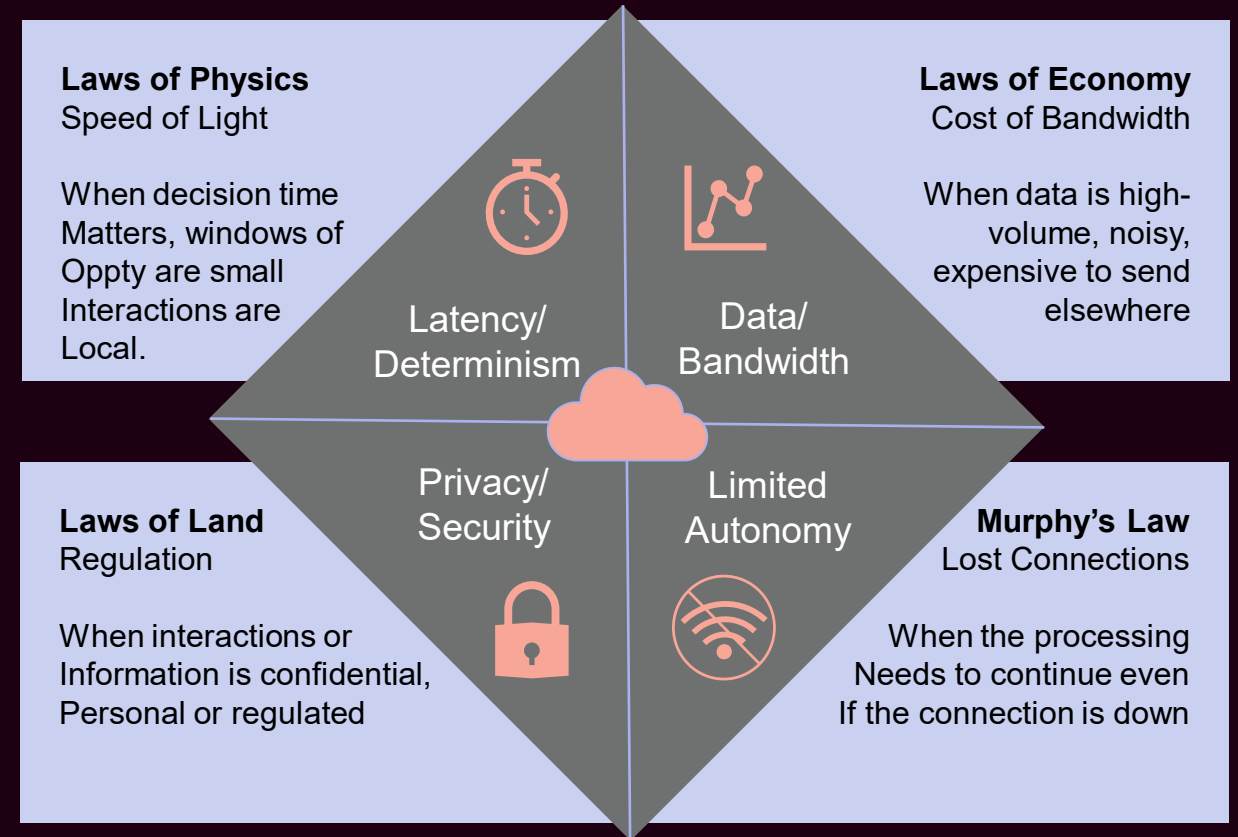


# Edge Computing

## What is it?

- ❖ Computing capacity **outside of the Datacenter**
- ❖ Closer to where data is **generated** and **acted** upon. Often data collected by cameras and sensors – not keyboard/mouse
- ❖ Highly **Distributed**

## What drives it?





# Edge computing has unique requirements...



## Environmental

- Wide temperature
- Shock & vibe
- Dust filtering & fanless
- Low acoustic
- IP protection



## Security

- Encrypted data
- On-site authentication
- Movement & tamper detection
- Physical Security



## Continuity

- Diverse connectivity
- Optimized performance
- Redundant operation



## Management

- Single tool for DC & edge
- Automate deployment
- Lifecycle Management

# Portfolio Overview - From Far Edge to Core

## Edge Client



SE10



-20°C to 60°C

ATOM

Up to 32 GB RAM



M90n-1



0°C to 50°C

Celeron, i3

Up to 8GB RAM



SE30



-20°C to 60°C

Celeron, Core™ i3, i5

Up to 16GB RAM



SE50



0°C to 50°C

Core™ i5, i7

Up to 32GB RAM

## Edge Server



SE350\*



0°C to 55°C

Xeon® D-2100

Up to 256GB RAM



SE350V2



0°C to 55°C

Xeon® D-2700

Up to 256GB RAM



SE360V2



-20°C to 65°C

Xeon® D-2700

Up to 256GB RAM



SE450



-5°C to 55°C

Xeon® SP 3<sup>rd</sup> Gen

Up to 1TB RAM

## Datacenter



ThinkSystem



0°C to 35°C

## Gateways

### Diverse Portfolio

From ultra compact gateways to data center grade products.

## Base Station / DC Closet

### Highest Performance

CPU & GPU rich systems for ultimate performance.

## Data Center

### Flexible Deployment

In harsh environments with ruggedized devices & unique cooling capabilities.

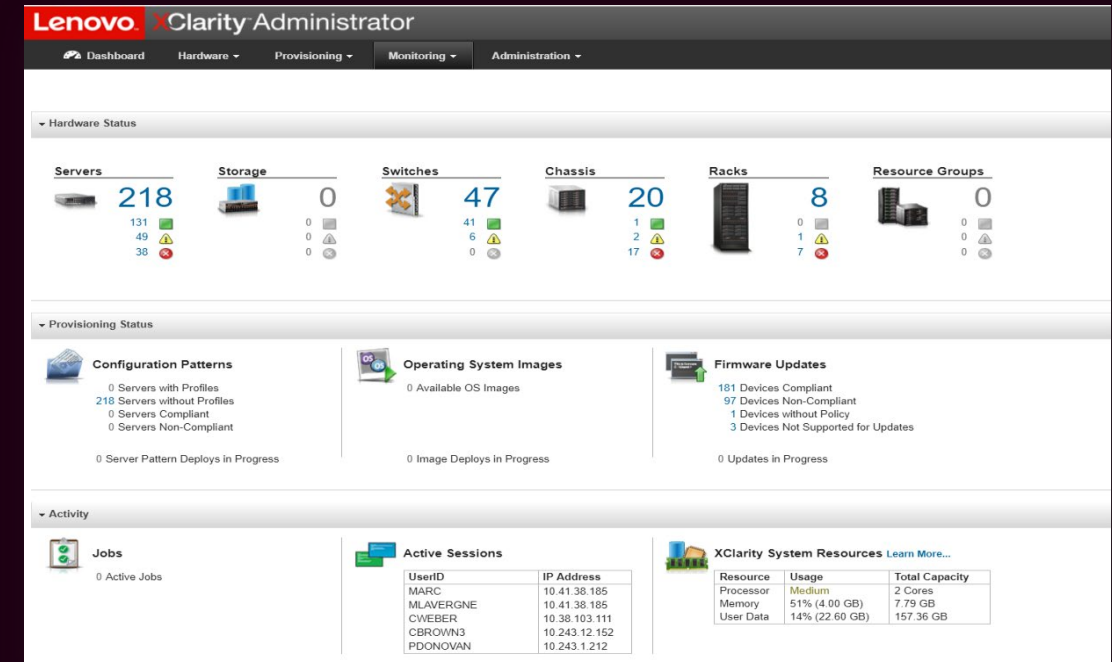


2023 Lenovo Reserved. All rights reserved.

\* SE350 will continue to be available until 3/31/2025

# Common Management Tool across ThinkEdge: **XClarity Administrator** for Infrastructure Management

- **Reusable Patterns and Policies**
  - Configuration Patterns
  - Jump start provisioning with pre-defined UEFI settings
  - Firmware level policy management streamlines ongoing maintenance
- **Real-Time Monitoring**
  - Forward alerts, emails, and events
  - Call Home to create service tickets
  - Centrally launch remote control sessions to manage endpoints as if you were at the local console



- **Automated OS installation**
  - Minimize manual steps with scalable installation of hypervisors and operating systems to multiple bare metal servers



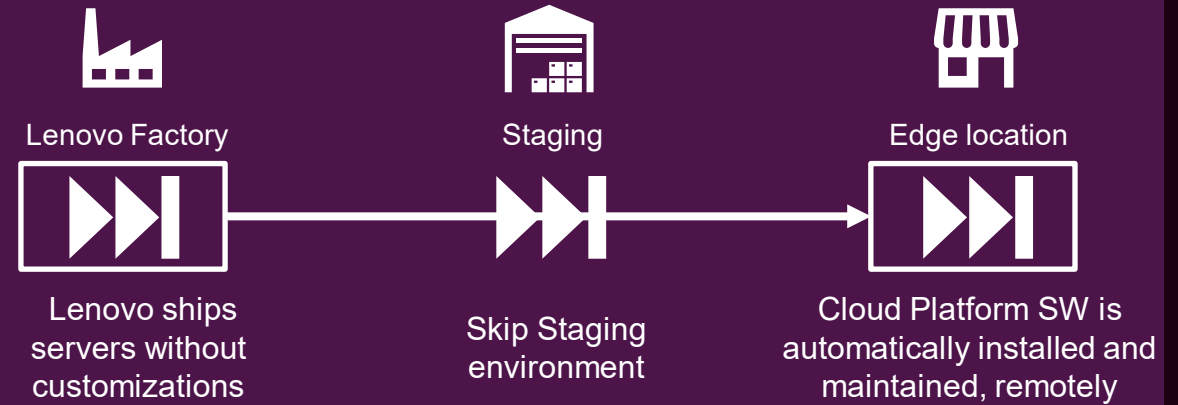
# Edge Infrastructure deployment automation for Servers:

## Lenovo Open Cloud Automation

### Problem statement

- Initial roll-out and installation: many geographically dispersed sites requiring lots of trips to deploy and synchronous work between field and HQ engineers.
- Day to day maintenance: Regular firmware & BIOS updates, new versions of OS, cloud SW, security patches, etc.
- Lack of skilled engineers in each edge location.

### Solution



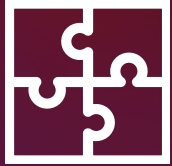
### How we do it

- Secure nZTP Process for Lenovo Edge devices leveraging core Lenovo IP, unique device database, and capabilities of Edge servers.
- Use true out-of-band management to boot and deploy customized or standard OS images directly on bare-metal.
- Install Cloud Software automatically from remote location using Infrastructure as Code and GitOps industry best practices

### Customer Benefits

- **Avoid logistic hops, save on shipping, reduce lead-time and carbon footprint**
- **Eliminate factory OS golden images pre-load for greater agility and flexibility**
- **Infrastructure always has latest software version, without the need for staging environment or heavy field engineer fleets**

# Lenovo OEM Benefits



## Full OEM Portfolio of Offerings

- Commercial product offerings including PCs, Smart Edge Gateways, Tablets, Servers, Storage, Networking & 3rd Party offerings.
- Extended Life Program: providing 3-5 years, lifecycle across multiple platforms.
- Global warranty and premier services



## Global OEM Specialization

- Dedicated OEM sales specialists with global and regional coverage.
- Dedicated engineering resources focused on innovation for your solution development needs.
- Vertical positioning and industry expertise



## OEM Capabilities

- E2E program management for your solution.
- Multi-level customization services, including blank chassis, bezels, packaging, logos, documentation, WW Label, imaging and global deployment services.
- Strategic technology partnerships, including Intel IOTG Solution Alliance, RFP Ready Kits and Market Ready Solutions.



**Accelerate your AI journey.**

**In the Lenovo AI Center of Discovery & Excellence**  
Proof of Technology | Workshops | Partner Collaboration | Benchmarking | Best Practices  
Data Scientists | AI Architects | Engineers | Suppliers | Software Partners | Industry Consortia

**10+** global technical benchmarks  
**40+** HPC & AI technical field sales  
**100+** engineers & researchers in the **Lenovo AI Research Lab** [Learn More](#)  
**20+** AI Solution Partners with a global workforce of thousands.  
**23k** Channel Fulfillment Partners

Industry Memberships: NVIDIA, LPRC, OECD.AI Policy Observatory, MLCommons, MLPerf, THE OPEN RETAIL INITIATIVE

Crosswave & Lenovo AI Innovators accelerates the ability to not only provide hardware to our customers, but to offer turnkey solution that can be simply implemented to address a business challenge helping customers move quickly adding ROI.

**Smarter  
technology  
for all**



# Notices and Legal Disclaimers

Intel technologies may require enabled hardware, software or service activation.

No product or component can be absolutely secure.

Your costs and results may vary.

Intel is committed to respecting human rights and avoiding complicity in human rights abuses. See Intel's Global Human Rights Principles. Intel's products and software are intended only to be used in applications that do not cause or contribute to a violation of an internationally recognized human right

Intel does not control or audit third-party data. You should consult other sources to evaluate accuracy.

© Intel Corporation. Intel, the Intel logo, and other Intel marks are trademarks of Intel Corporation or its subsidiaries. Other names and brands may be claimed as the property of others.



# Q&A



Please enter your questions  
using the Q&A button



# *Thank you for joining us!*

---

## More information about **IANA:**

- Intermodal EXPO Registration is OPEN!
- September 11-13, 2023, in Long Beach, California

E-mail us @ [info@intermodal.org](mailto:info@intermodal.org)

Visit us @ [intermodal.org](http://intermodal.org)



# IANA

INTERMODAL ASSOCIATION  
OF NORTH AMERICA™

*THE CONNECTING FORCE BEHIND INTERMODAL FREIGHT*

---

© 2023 Intermodal Association of North America. This presentation was produced for the use of IANA members and may not be reproduced, re-distributed or passed to any other person or published in whole or in part for any purpose without the prior consent of IANA.

IANA, 11785 Beltsville Drive, Calverton, MD 20705-4048.